

# USING ULYSSES REMOTE APP ON MOBILE DEVICES

---

## USING ULYSSES REMOTE APP ON MOBILE DEVICES

### Contents

<b>Preliminary Pages</b>	<b>Page</b>
Title / Authorisation.....	i
<b>Chapter 1 – Objective.....</b>	<b>1</b>
<b>Chapter 2 – Connecting Mini Camera to Wi-Fi Router.....</b>	<b>2</b>
<b>Chapter 3 – Installing Ulysses Remote App on Mobile Device.....</b>	<b>3</b>
3.1    Instructions For Installing Ulysses Remote Android Application .....	4
<b>Chapter 4 – Accessing Mini Camera from the App.....</b>	<b>6</b>
4.1    Manual method for accessing Mini Camera from the App.....	6
4.2    Auto Discovery Method of Accessing Mini Camera from the App .....	9
<b>Revision History .....</b>	<b>13</b>

---

## Chapter 1 – Objective

---

This document serves as a guide to view and control the Ulysses camera series on mobile devices (such as mobile phones and tablets) using the Ulysses Remote app.

This document shall describe the hardware and software setup required.

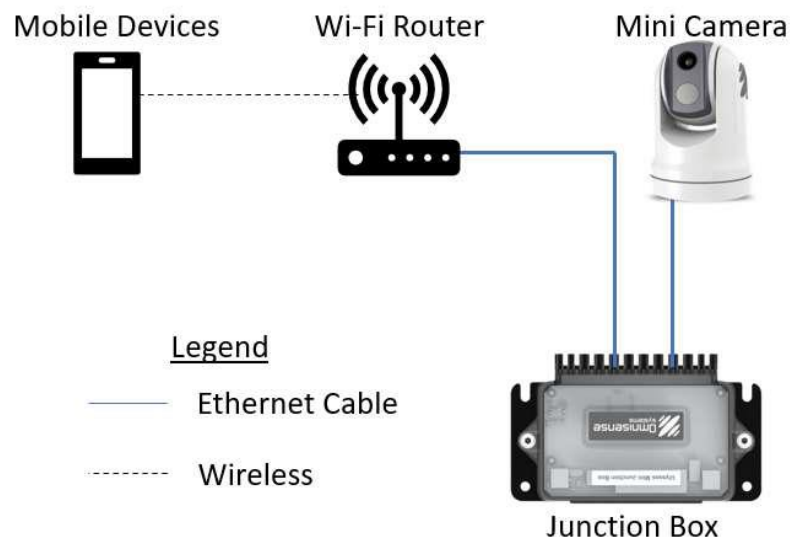


**For illustration, this document uses a Mini camera as an example to describe the process. The process is the same for other camera models.**

This document is separated into the following sections:

- 1) Connecting Mini Camera to Wi-Fi router.
- 2) Installing Ulysses Remote App on mobile devices.
- 3) Accessing the Mini camera from the App.

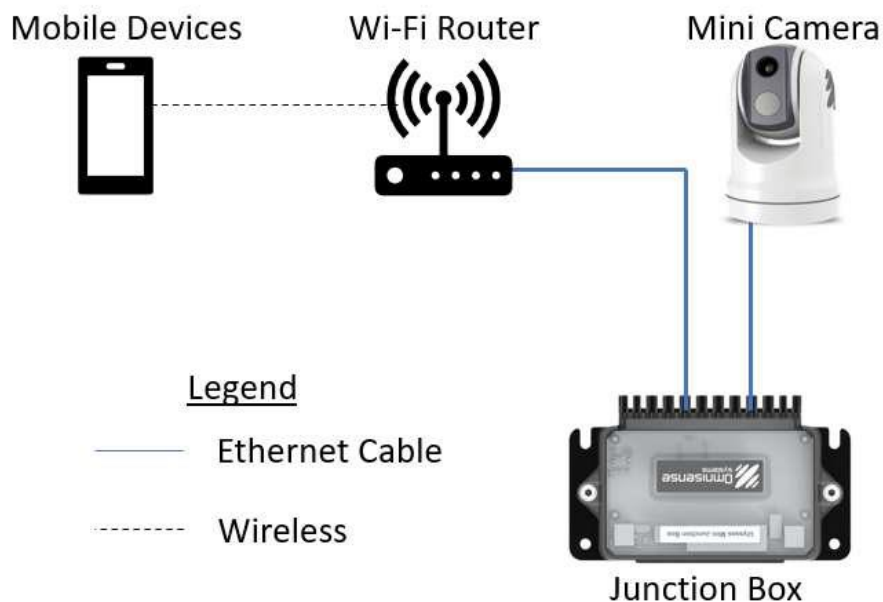
Below shows the connection that shall be described in this document.



---

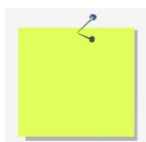
## Chapter 2 – Connecting Mini Camera to Wi-Fi Router

---



Referring to the diagram above, follow the steps below to connect the Mini camera to the Wi-Fi router.

1. Connect the Wi-Fi LAN port to the Junction Box MFD port via ethernet cable.
2. Connect the Mini camera to the Junction Box camera port using the camera harness cable.
3. To connect the camera and the Wi-Fi router to the same IP address network range, you can use either of the following options:
  - a) Set the Mini camera IP address to the Wi-Fi IP address network range or
  - b) Set the Wi-Fi IP address range to the Mini camera IP address range.



Please refer to your Wi-Fi router's manual for more information on configuring the router.

Please refer to the Mini Camera manual for the location of the ports and information on configuring the camera.

---

## Chapter 3 – Installing Ulysses Remote Android Application

---

You will be required to install the Ulysses Remote app on your mobile devices to view and control the camera.

Depending on the Operating System (OS) on your mobile devices, please install the app following the instructions below:

1. For Apple iOS via the App Store

Search for Ulysses Remote

or

Use the below link to find the app for Apple.

<https://apps.apple.com/tt/app/ulysses-remote/id1490814845>

Please follow the on-screen prompts on your Apple device to proceed with the installation.

2. For Android

Follow the steps below to download the Ulysses remote application.

- a) Open the web browser on your Android device.
- b) Go to the web page mentioned below on your web browser.

<https://omnisense-systems.com/support/>

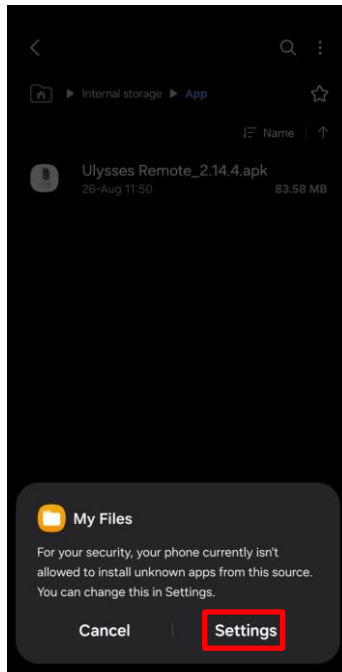
- c) Click the download button to download the Ulysses Remote APK.
- d) Please follow Section 3.1 for installation on your Android device.

---

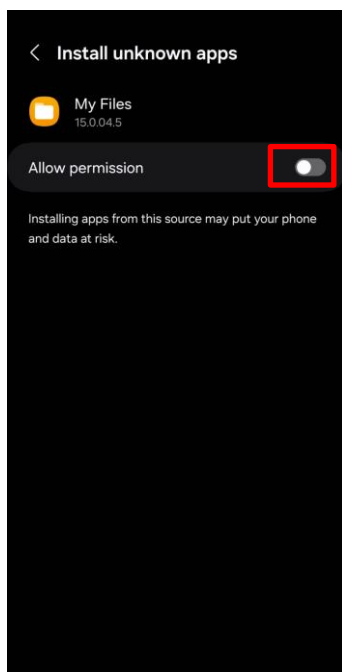
## 3.1 Instructions For Installing Ulysses Remote Android Application

The steps below show the instructions for Installing the downloaded Ulysses Remote APK on your Android device.

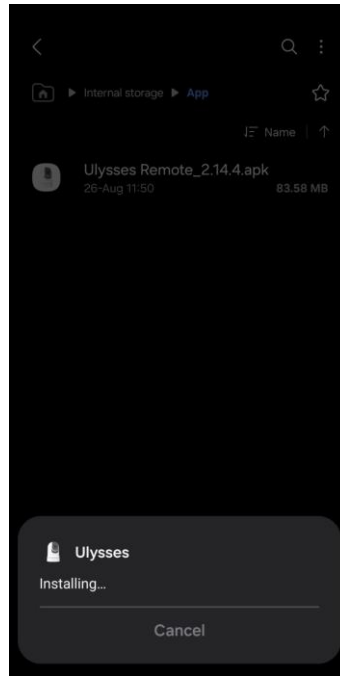
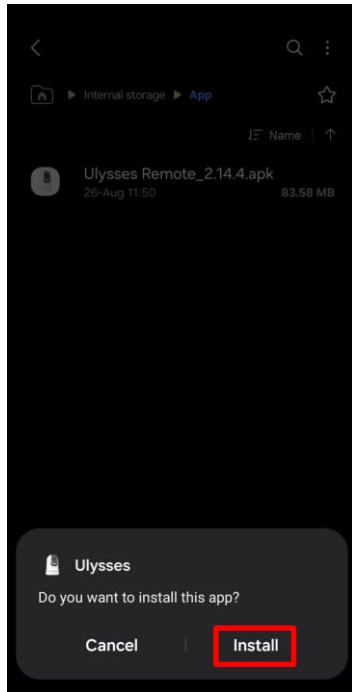
1. Open the downloaded Ulysses Remote APK on your Android device.
2. Click settings if you get the notification below.



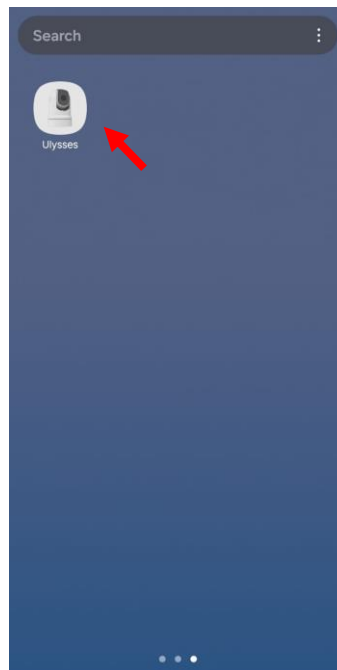
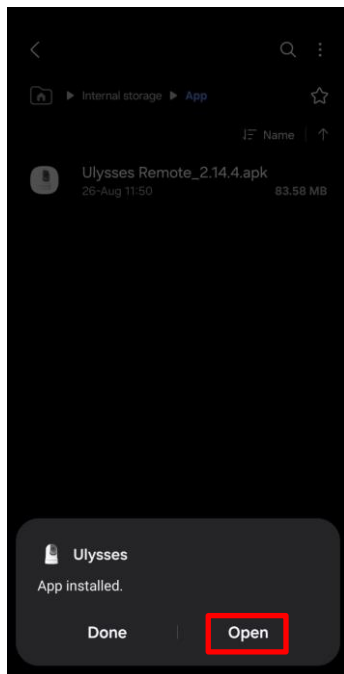
3. Enable the Allow Permission button to install downloaded apps.



- 
- Click the install button to install the Ulysses Remote APK.



- After installation, you will get a prompt to open the installed application. Also, you can find the application icon in your Android app drawer.



---

## Chapter 4 – Accessing Mini Camera from the App

---

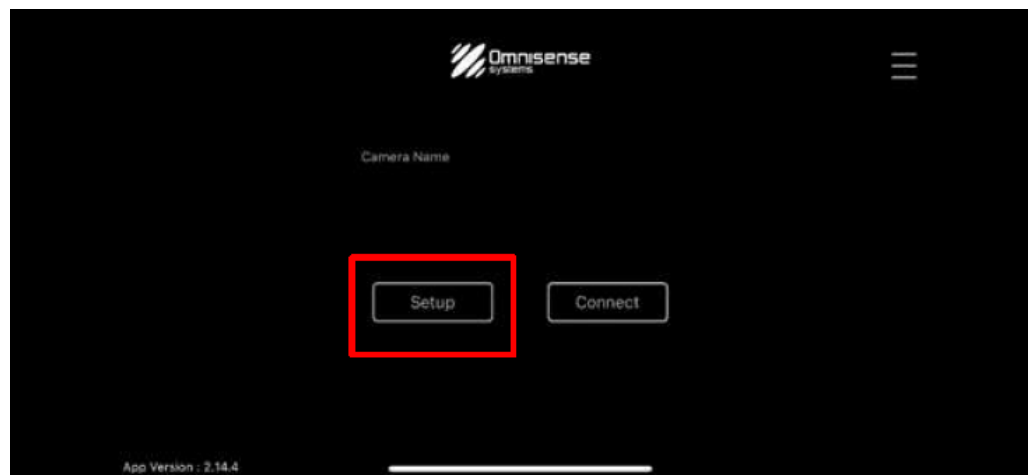
There are two ways to access the Mini camera from the app.

1. Manual Method
2. Auto Discovery

### 4.1 Manual method for accessing Mini Camera from the App

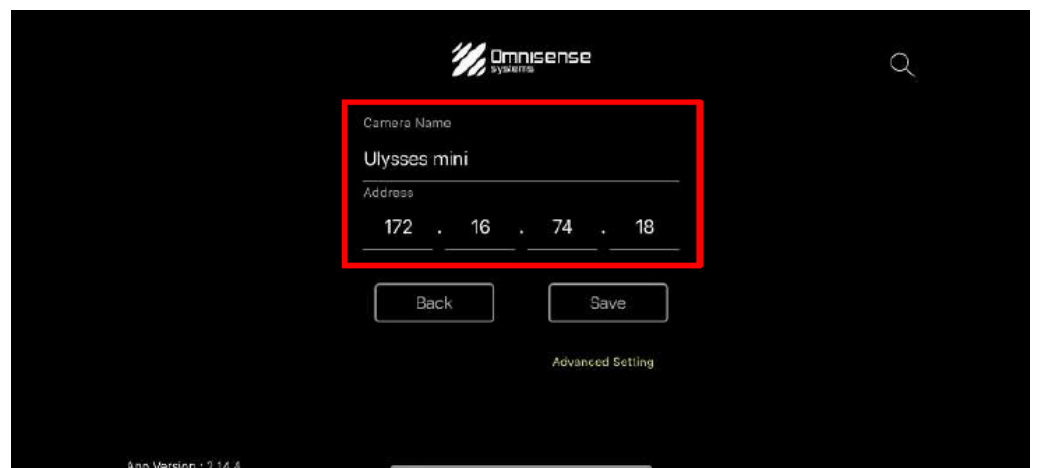
Follow the steps below to access the Mini Cam manually.

1. Connect your mobile device or tablet to the Wi-Fi router SSID.
2. Launch the Ulysses Remote app.
3. Press the Setup button on the app.



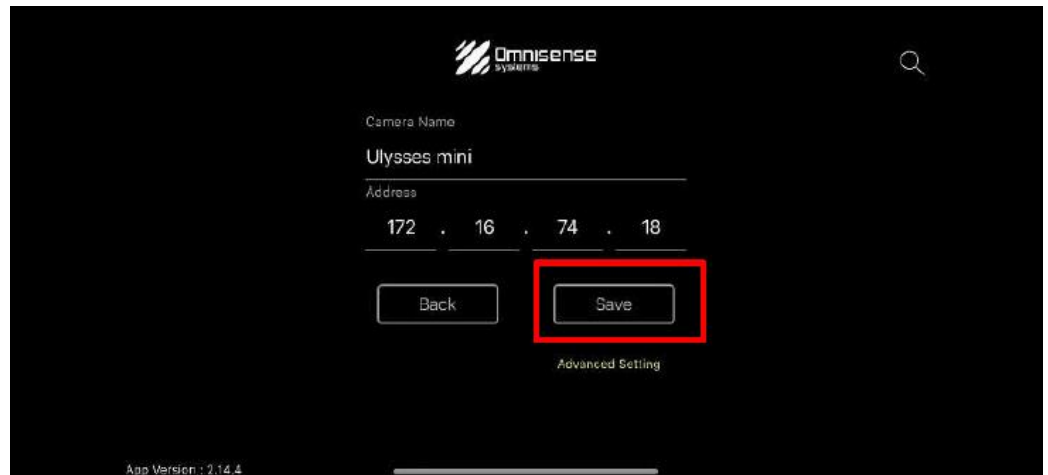
4. Assign a name for the device that you would like to connect and enter the IP address of the Mini camera on the app.

The example below shows the settings of a Mini Camera with IP address 172.16.74.18.

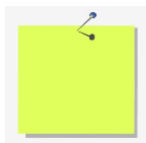
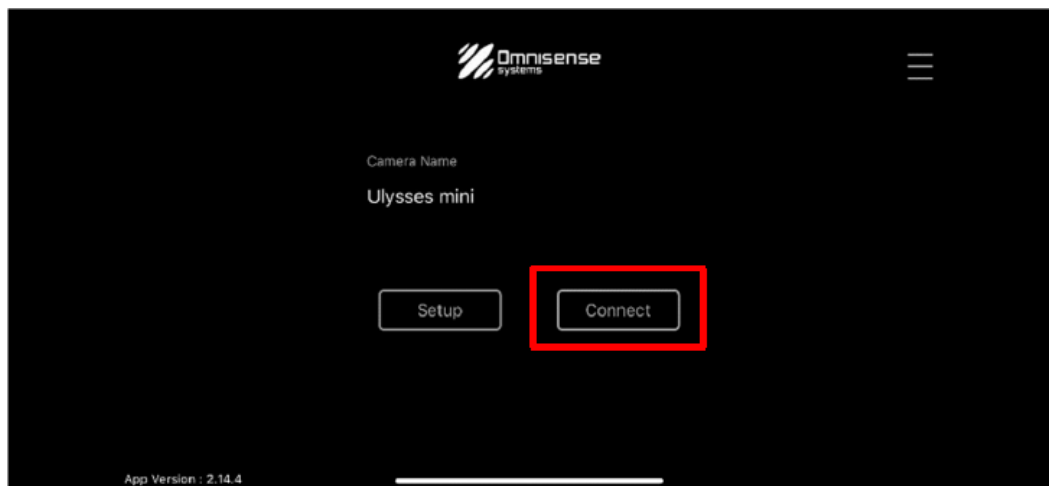




- 
5. Save the details made.



6. Press Connect on the app.



If you are connecting to the camera on your mobile device or Tablet for the first time, you will be prompted to enter the username and password for the camera. Please enter the credentials as needed.

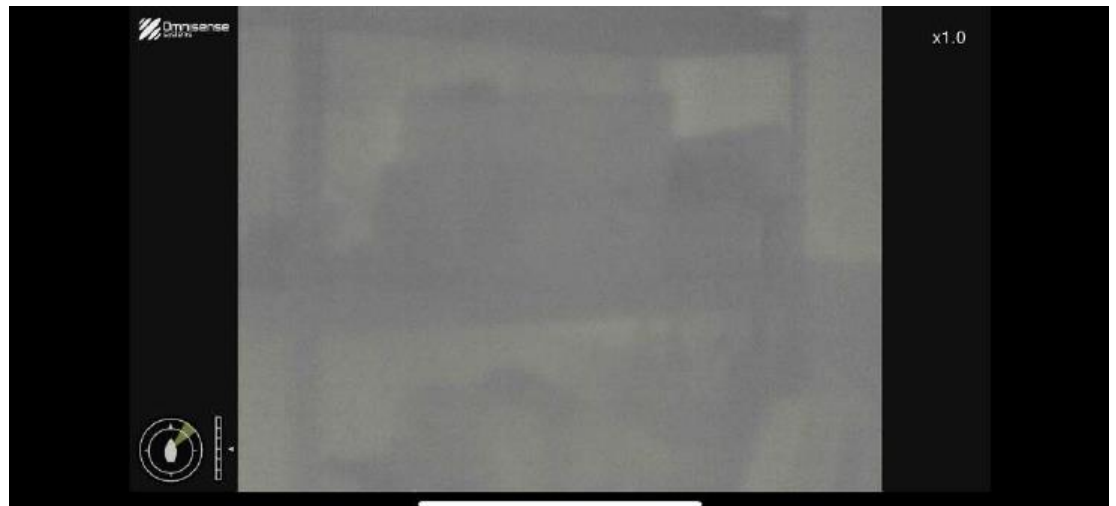
If you have not changed the password, the default username and password is:

Username: **admin**

Password: **12345**

---

7. The app should show the camera video and controls.

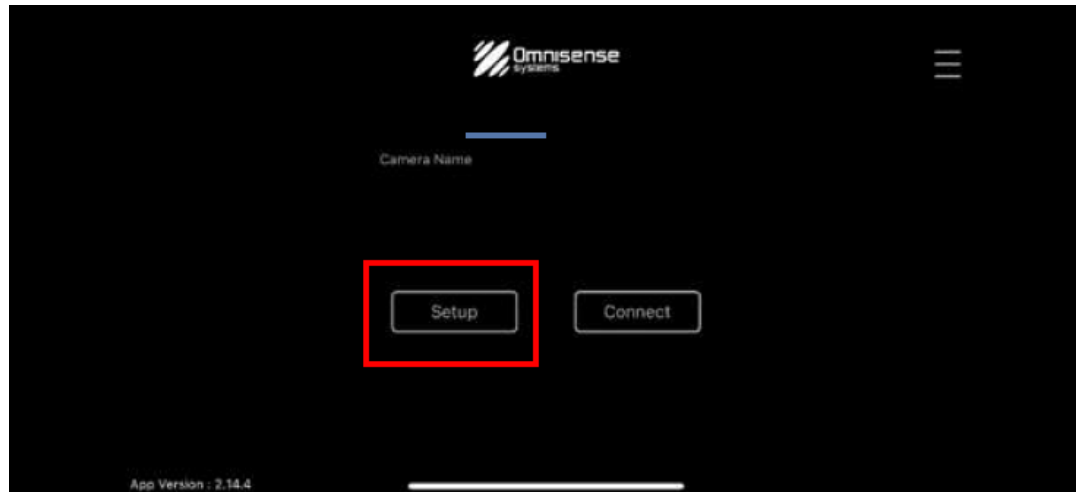


---

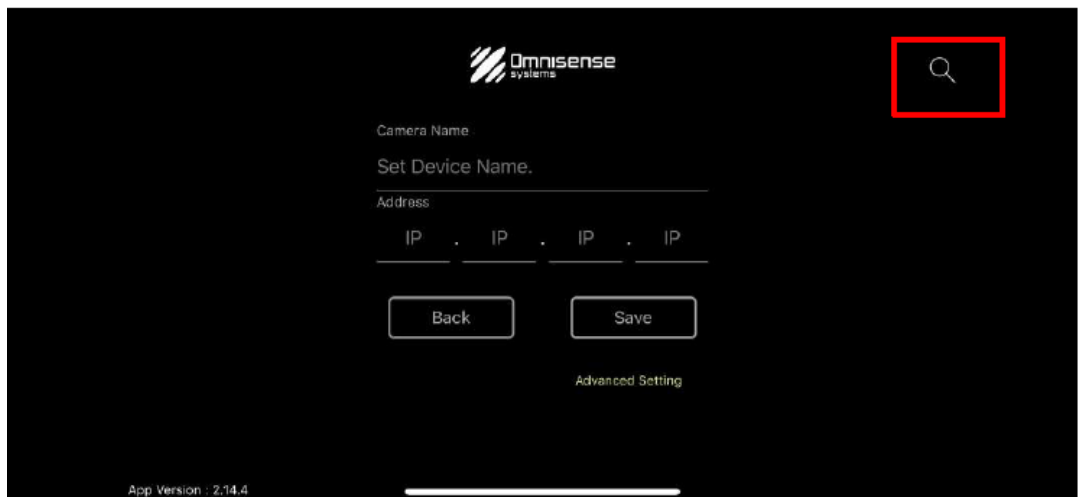
## 4.2 Auto Discovery Method of Accessing Mini Camera from the App

Follow the steps below to access the Mini Cam via the Auto Discovery method.

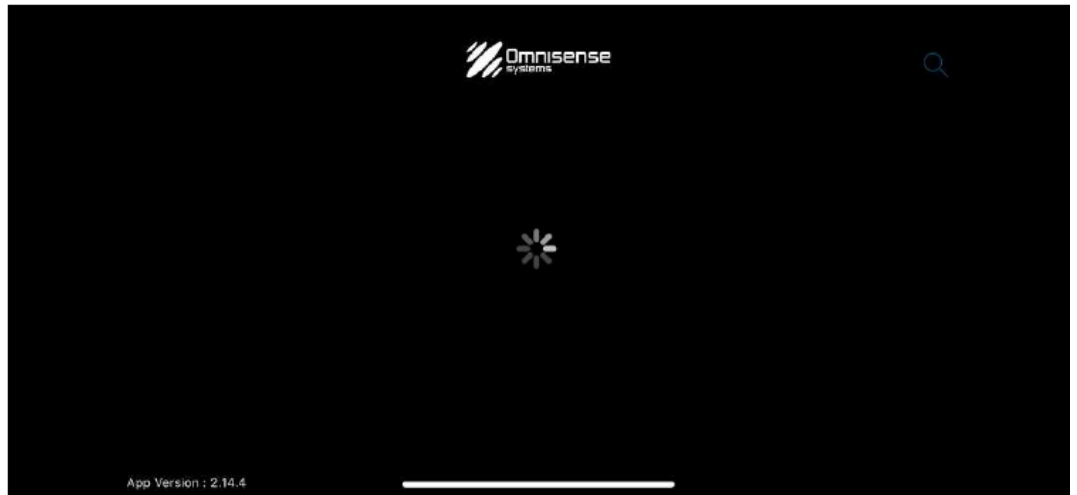
1. Connect your mobile device or tablet to the Wi-Fi router SSID.
2. Launch the Ulysses Remote app.
3. Press the Setup button on the app.



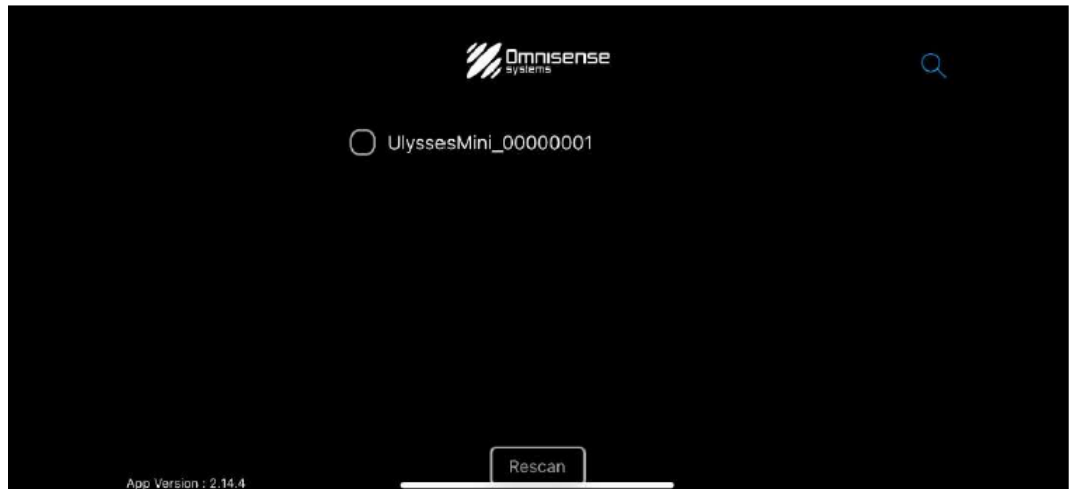
4. Click the search button on the app.



- 
5. After the Search button is pressed, the app should perform an auto-discovery of the camera in the Wi-Fi network.

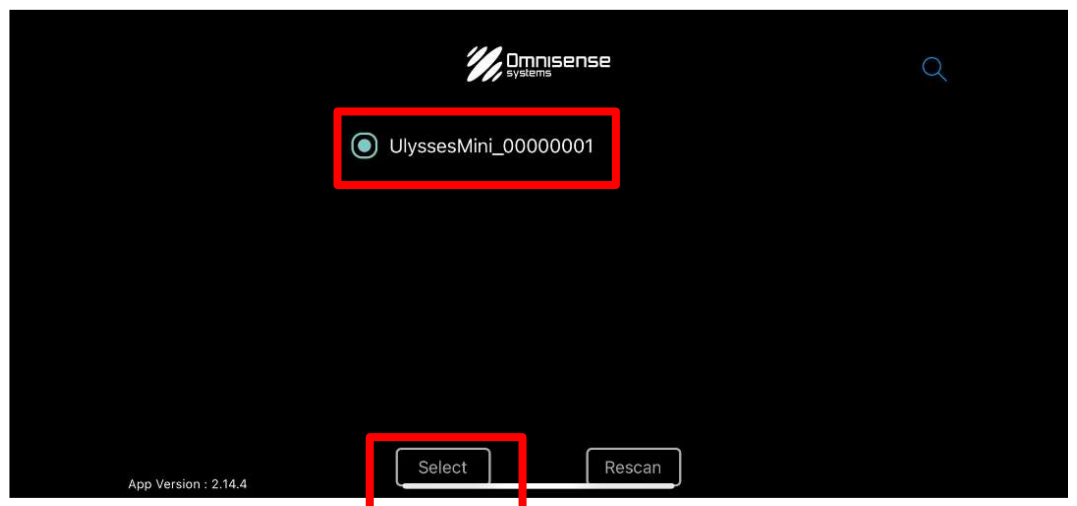


6. The camera should appear in the app if the network setup is configured correctly.

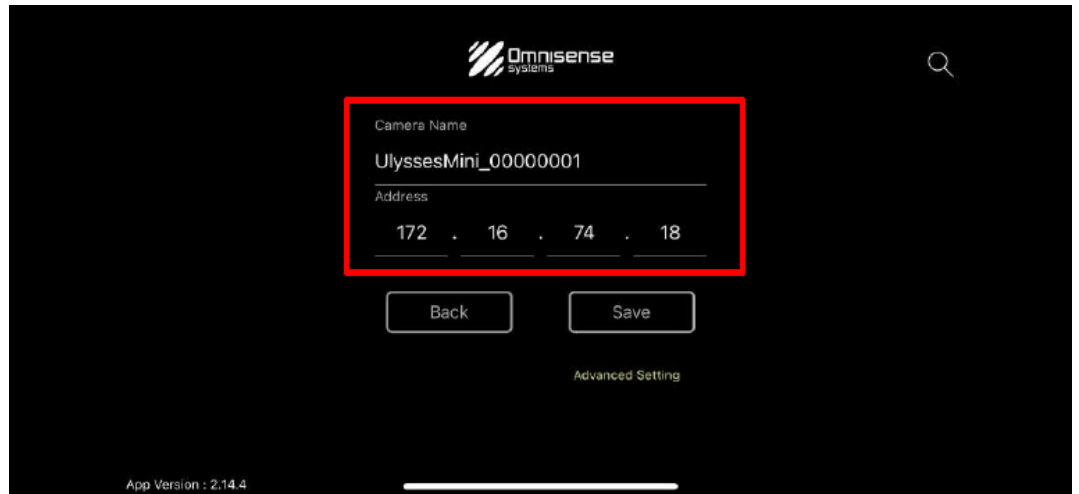


If the camera does not show on the app, please perform a rescan by pressing the Rescan button.

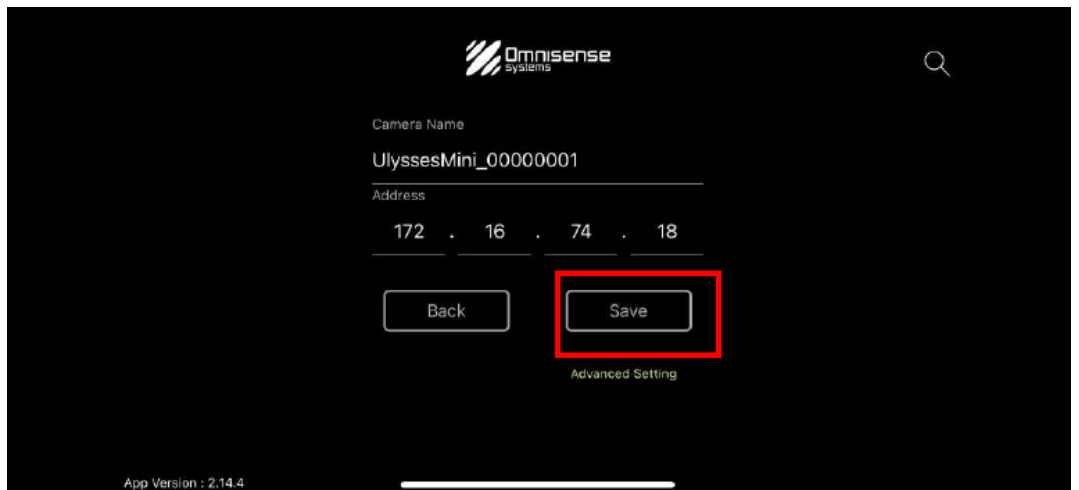
7. Select the camera and click the Select button.



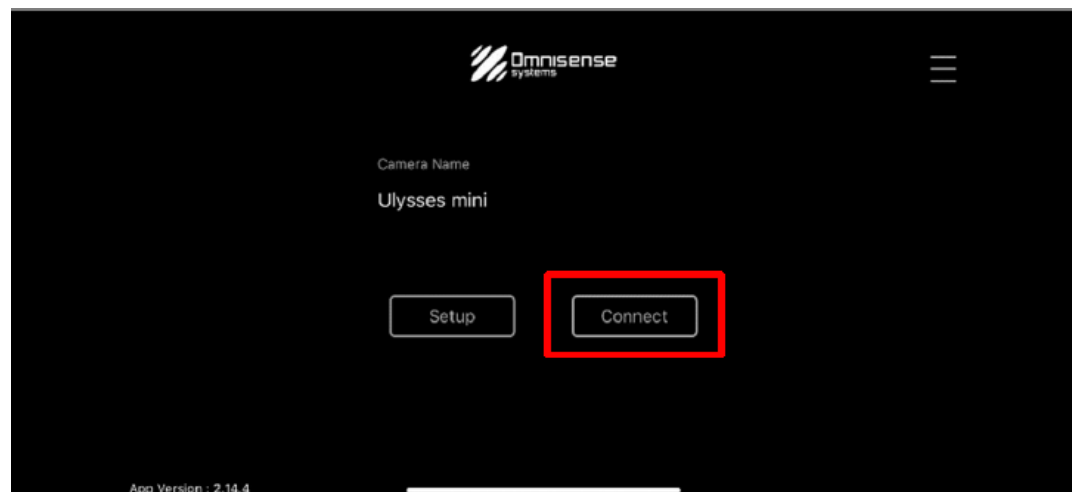
- After the Select button is pressed, the details of the camera name and IP address should show on the Ulysses remote app.



- Press the Save button.



- Press Connect on the app.





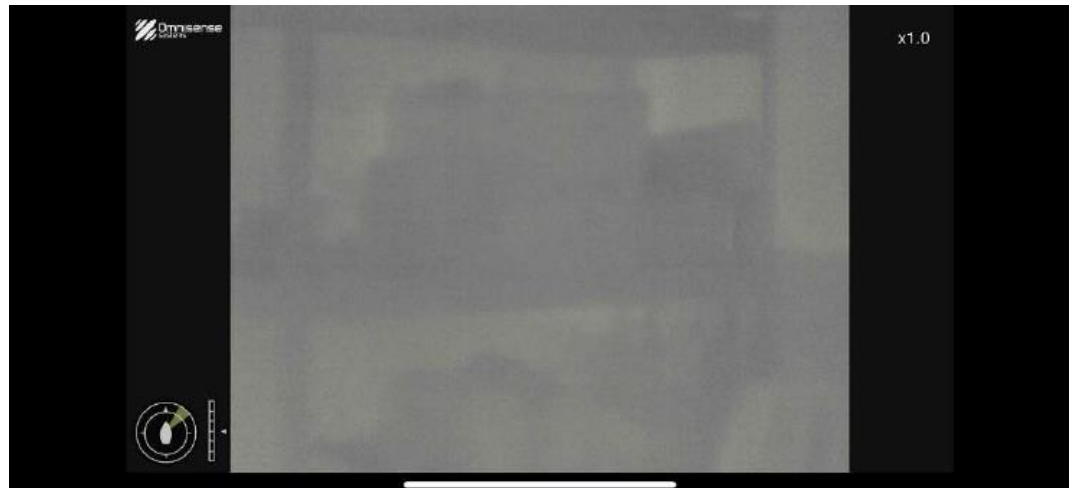
If you are connecting to the camera on your mobile device or Tablet for the first time, you will be prompted to enter the username and password for the camera. Please enter the credentials as needed.

If you have not changed the password, the default username and password is:

Username: **admin**

Password: **12345**

11. The app should show the camera video and controls.



---

## Revision History

---

Revision	Date	Author	Changes
1.0	08/03/2024	Vignesh RR	Initial release.
1.1	31/08/2024	Vignesh RR	Added Android APK download/installation instructions
1.2	06/09/2024	Vignesh RR	Added link for downloading Ulysses Remote APK for Android devices