

Ulysses Specifications

<b>General</b> Sensor Type Thermal Resolution Sensitivity Field of View Focal Length Zoom	<b>Thermal Camera</b> 17um Uncooled Microbolometer LWIR FPA 640 x 480 50 mk 12°(H) x 9° (V) 50mm f1 Continuous E-Zoom 1.0X - 4.0X	<b>Colour Camera</b> 8.5 MP 1/2.5 CMOS n/a 1 lux (0.5 enhanced) 23° x 13° (Wide) / 7° x 4° (Tele) 15mm (Wide) to 50mm (Tele) HyperZoom 6X / 12X Optical
<b>System Specifications</b> Pan / Tilt Coverage Gyro Stabilisation Video Output Power Requirements Encapsulation	Pan: Continuous 360° Tilt: 100°, -90° 2 Axis, Heading Lock Digital up to 1080p (HD) Analog PAL/NTSC (SD) 9 VDC to 32 VDC, <25 W Nominal; 50 W max IP 66	
<b>Environmental</b> Operating Temperature Range Storage Temperature Range Heater Lightning Protection EMI Salt Mist Vibration Wind	-20°C to +60°C / -4°F to 140°F -40°C to +85°C / -40°F to 185°F Standard Window and Chassis De-Ice Standard IEC 60945 IEC 60945 IEC 60945 100kn / 115mph	
<b>Range Performance</b> Detection Range*	Up to 3.2km / 2mi	
<b>Dimensions</b> Size Weight	210mm x 385mm / 8.3in X 15.1in ≤9.0kg / 19.8lb	
<b>Package Content</b>	Camera Turret 15m / 50ft Interface Cable Remote Junction Box Operator Manual & Installation Manual	
<b>Optional Accessories</b>	30m / 100ft Interface Cables	
<b>Part No.</b>	U2E15012-SP	

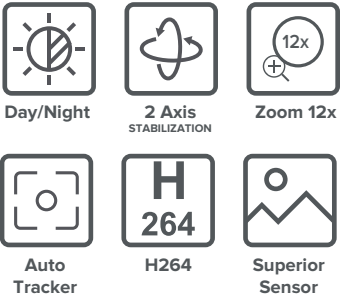
\*Subject to environmental conditions & based on NATO target 2.3m x 2.3m / 90in x 90in

**Note:** 1. Due to our policy of continual improvement, specifications may change without prior notice.  
2. System must not be used in replacement of human observation.



**United States**  
1881 West State Road 84, Bldg. 1 Unit 102  
Fort Lauderdale, Florida 33315, USA  
T: +1 (954) 316-6230

**Singapore**  
8 Penjuru Lane, Singapore 609189  
T: +65 6844 3191 F: +65 6844 3190  
E: enquiries@omnisense-systems.com  
omnisense-systems.com

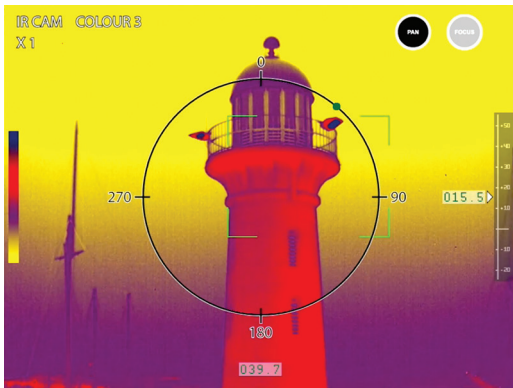


Ulysses  
Ultra performance multi-sensor  
marine thermal camera

The next generation Ulysses packs quality into a rugged marine grade platform with gyro-stabilization and best-in-class optical sensors, for clear sightings and uninterrupted target tracking, making it indispensable for operators in need of performance at mission-critical moments.

The Ulysses delivers more than high resolution and crisp images in day, night, smoke, fog or glare but increases the essential element of crew awareness. The Ulysses is also designed and built to be adaptable to end-user needs with proprietary components that can be configured to suit any mission profile or extend mission payload requirements.

# Key Features



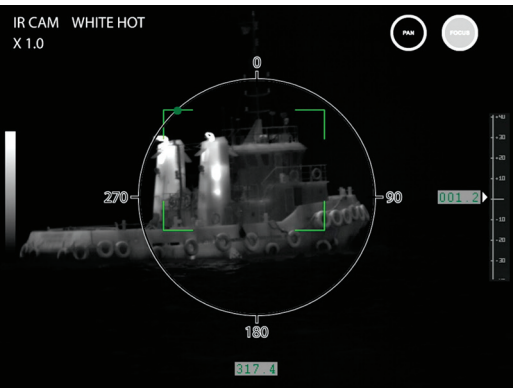
Thermal sensor with large f1 aperture with 4x digital zoom



High performance day and low-light CCD camera with 12x optical zoom



Smooth real-time images



Gyro-stabilized for enhanced target sighting and tracking

## Sensors that Outperform

Superior sensors package delivers high-speed thermal image at 30hz, ensuring smooth, real-time video with exceeding clarity and sharpness.

## Easy Integration

Wide interfacing options and seamless integration to most MFDs.

- ▶ Radar tracking with MARPA
- ▶ Slew-to-Cue
- ▶ Video Tracking

## Built for a Storm

Compact and rugged design makes it complement on any vessels.

- ▶ Compact and cost effective, ideal for all class of boaters and operators
- ▶ Single wire to camera unit makes for easy wire routing and installation
- ▶ Quality materials and construction for a long service life

## Rated for Maritime Application

IP66 and IEC60945 rated for protection against electro-magnetic interference (EMI), vibration and storms.

- ▶ Night navigation
- ▶ Collision avoidance
- ▶ Search & Rescue
- ▶ Law enforcement
- ▶ Coastal and river surveillance
- ▶ Special boat operations
- ▶ Force protection
- ▶ Unmanned surface vessels

## Expand your Operational Capabilities

Enhance your surveillance with the new Argus NVL, a marine grade Network Video Logger that synchronizes video images captured by your Ulysses camera, with data from your onboard navigational electronics.

- ▶ Integrated with NMEA0183 and NMEA2000 for interface to other marine sensors and electronics
- ▶ Synchronized data from GPS, autopilot, gyrocompass, sonar etc
- ▶ Robust solution of shipboard recordings for analysis and review



## Touchscreen Monitor

Connect to a HDMI Touchscreen display for a smooth and responsive multi-touch control area.



# Ulysses



380mm  
(15.1in)

220mm  
(8.3in)